

HEAVY DUTY CAM ACTION SIDE DOOR LOCK

Polar No. 257

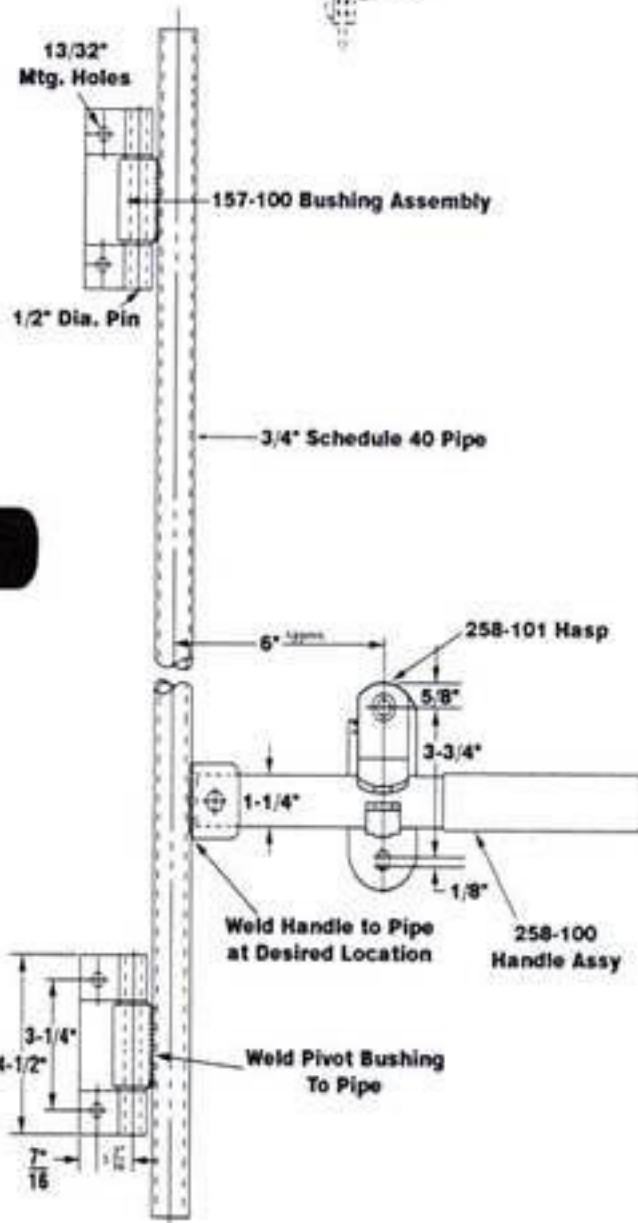
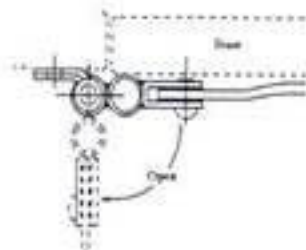
All steel lock allows entire length of pipe to cam over to secure doors. Handle has permanently affixed vinyl grip and is riveted, not bolted to handle lug for added security.

Bushing assembly supplied with non-removable pin for maximum security. Also available with removable pin (257-R). Suppled less padlock.

Supplied less 3/4" pipe (schedule 40).
Finish — Zinc Plated

COMPONENT PARTS FOR 257 LOCK

Part No.	Description
157-100	Bushing Assy
258-100	Handle Assy
258-101	Hasp & Handle Keeper



Polar No. 257 (shown)
No. 257-R same as above but
with removable pin.

DIMENSIONAL DRAWING

No. 257